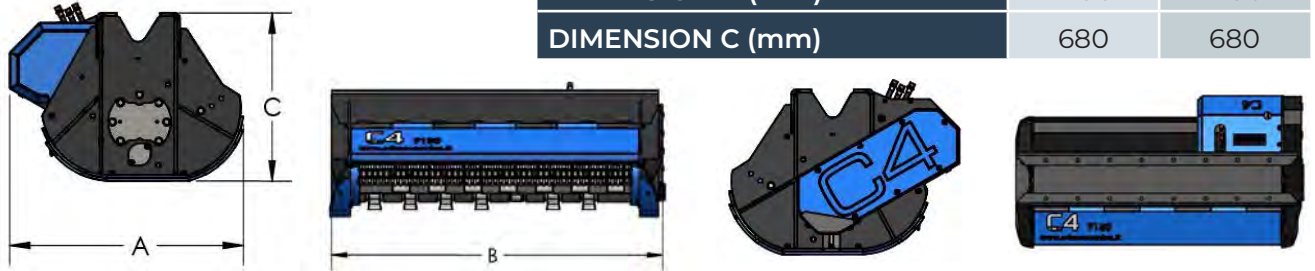


SERIES F

F100

F130

MODEL	F100	F130
CUTTING WIDTH (mm)	1075	1375
WEIGHT (Kg)	605	820
OIL PRESSURE (bar)	250	250
OIL FLOW (l/min)	80-130	100-150
NUMBER OF HAMMERS	20	28
MAX CUTTING DIAMETER (mm)	200	200
DIMENSION A (mm)	950	950
DIMENSION B (mm)	1490	1790
DIMENSION C (mm)	680	680



Engine with anti-cavitation valve to preserve engine and excavator during travel stops.



Predisposition of holes on the part top of the machine, that allow the custom positioning support along the top.



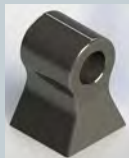
Back protection with support chains and replaceable anti-wear skids.



Double bottom case to increase the robustness and optimize the cutting volume. Internal lining wear resistant in Hardox.



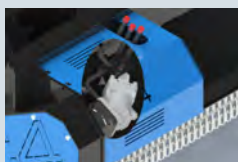
Standard with 3m hydraulic Hoses. Available as an **option** set of hoses with customized lengths.



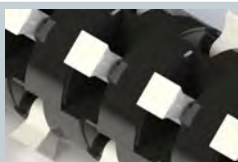
Symmetrical reservable Hammer.



Available as an **option**: standard attachment and pins with customized measurements.



Piston engine protected by a casing (in the case of shocks) and mounted on extension with bearings to avoid a premature wear. Belt drive essential for applications where the powers transmitted begin to become consistent, has the function of elastic joint preserving both the motor and the rotor from unexpected stresses.



Closed rotor with retractable hammers, designed for be robust and versatile in all uses.



Front protection with chains, adjustable on 4 positions for easy maintenance.