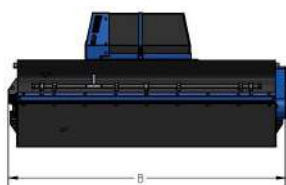
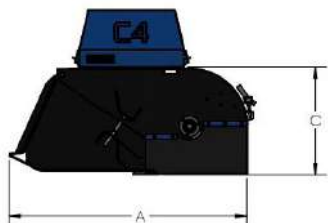


BS SERIES

BS150/BS150H
BS165/BS165H
BS180/BS180H
BS210/BS210H

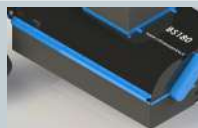
| MODEL | BS150 | BS165 | BS180 | BS210 |
|--|--------|--------|--------|--------|
| MODEL (with blade and collecting tank in hardox) | BS150H | BS165H | BS180H | BS210H |
| BRUSH DIAMETER (mm) | 560 | 560 | 560 | 560 |
| WORKING WIDTH (mm) | 1500 | 1650 | 1800 | 2100 |
| WORKING WIDTH WITH BRUSH (mm) | 1950 | 2100 | 2250 | 2550 |
| WEIGHT (Kg) | 400 | 425 | 450 | 500 |
| PRESSURE (bar) | 180 | 180 | 180 | 180 |
| CAPACITY (lt) | 450 | 480 | 510 | 560 |
| BRUSHES | 35 | 38 | 41 | 47 |
| A DIMENSION (mm) | 1425 | 1425 | 1425 | 1425 |
| B DIMENSION (mm) | 1688 | 1838 | 1988 | 2288 |
| C DIMENSION (mm) | 615 | 615 | 615 | 615 |



Engine supported by extension with bearings inside the machine.



Chain transmission.



Front and side rubber protection.



Standard with attachment for skid-steer, **optional**: customized attachment.



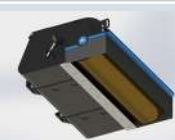
Available as **optional**: system of spraying water with electric pump and 100 liter tank for dust suppression or system for fall.



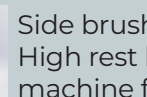
Available as **optional**: wire side brush for cleaning road curbs, complete with pipes and engine.



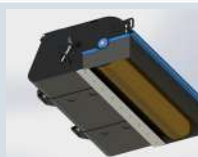
Slotted brush support arm, to ensure constant resting on the ground and avoid damaging the brush unit.



Front roller connected to the collection bucket by hinges to facilitate cleaning of the machine. With adjustment of the rotor height to guarantee optimal functioning and compensate for the progressive wear of the brushes.



Side brush, adjustable in 4 positions. High rest location and close to the machine for not occupy the roadway.



Polypropylene brush set or steel brushes for heavier jobs.



Standard with 1.8mt hydraulic hoses. Quick couplings included.