

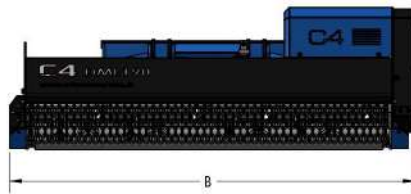
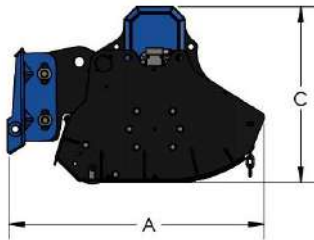
DML SERIES

DML160

DML190

DML220

| MODEL | DML160 | DML190 | DML220 |
|---------------------------|--------|--------|---------|
| CUTTING WIDTH (mm) | 1590 | 1890 | 2190 |
| WEIGHT (Kg) | 565 | 610 | 660 |
| OIL PRESSURE (bar) | 220 | 220 | 220 |
| OIL FLOW (l/min) | 70-100 | 90-120 | 100-140 |
| NUMBER OF HAMMERS | 16 | 24 | 28 |
| NUMBER OF KNIVES | 48 | 72 | 84 |
| MAX CUTTING DIAMETER (mm) | 70 | 70 | 70 |
| A DIMENSION (mm) | 1100 | 1100 | 1100 |
| B DIMENSION (mm) | 1890 | 2190 | 2490 |
| C DIMENSION (mm) | 760 | 760 | 760 |



Motor with anti-cavitation valve to preserve motor and operating machine during travel stops.



Double bottom case to increase strength and optimize cutting volume.



Front protection with chains.



Standard with 3m hydraulic hoses. Available as **optional**: set of hoses with customized lengths.



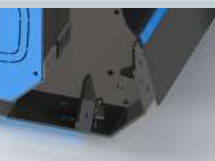
Hydraulic gear motor as standard, protected from the casing in the event of collisions and mounted on extension with bearings to avoid premature wear. Available as **optional**: piston motor. Belt transmission, essential for applications where the transmitted powers begin increasing, thanks to the elastic joint that has the function to preserve both the motor and the rotor from unexpected stresses.



Rotor can be equipped with knives for more shredding capacity and lower power requirement. Rotor can be equipped with hammers for safely tackle shrubs up to 60mm in diameter.



Oscillating attachment system with slotted pins, which is simplified compared to the DM series one, to overcome easily uneven ground.



Rear protection with adjustable support roller on three positions and rubber protection strip.



- Three-blade knife
- Hammer



Standard with skid-steer attachment, **optional**: customized attachment.