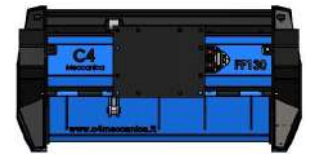
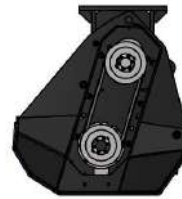
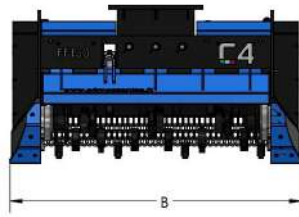
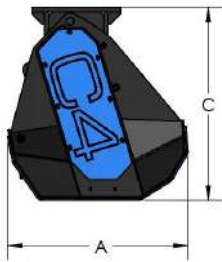


FF SERIES

FF130

FF130L

MODEL (fixed teeth)	FF130
MODEL (with cutting depth reducer)	FF130L
CUTTING WIDTH (mm)	1300
RECOMMENDED EXCAVATOR (ton)	12-18
FF WEIGHT (fixed teeth model)	860
FF-L WEIGHT (mod. with cutting depth reducer)	886
OIL PRESSURE (bar)	250
OIL FLOW (l/min)	100-150
NUMBER OF TOOLS	26
MAX CUTTING DIAMETER (mm)	250
A DIMENSION (mm)	905
B DIMENSION (mm)	1870
C DIMENSION (mm)	1380
EXCAVATOR ATTACHMENT WEIGHT (min-max Kg)	70-110



Anti-cavitation valve to avoid damaging the hydraulic system when it stops working and to exploit all the available power.



Rear protection with chains.



Replaceable anti-wear skids with a large surface of contact with the ground.



Generous thickness of the case to increase robustness and optimize the cutting volume. Internal wear-resistant lining in Hardox.



Standard with 3m hydraulic hoses. Available as **optional**: set of hoses with customized lengths.



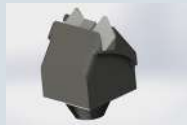
Standard replaceable tool with cutting edge in widia.



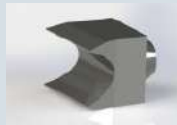
Plus replaceable tool with cutting edge in widia.



Available as **optional**: standard attachment and pins with customized measurements, flat plate for attachment as standard.



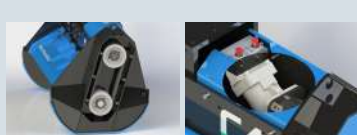
Replaceable tool with double point and cutting edge in widia.



Steel alloy tool for cutting depth reducer rotor.



As standard on FFL series; cutting depth reducer that allows the rotor to keep a constant number revolutions and to preserve tool life.



Piston engine inside the machine to protect it from bumps and debris. Motor extension on bearings to avoid premature wear. Belt drive with 1:1 ratio to maximize the transmitted power acts as an elastic joint preserving both the motor and the rotor from unexpected events. **Optional**: mechanical variable-displacement piston motor and automatic variable-displacement piston motor.



Fixed teeth rotor with interchangeable tools designed for heavy jobs.



Standard with front protection with hydraulically adjustable door, available as an **optional**: solenoid valve to control the jack with the principal line.