

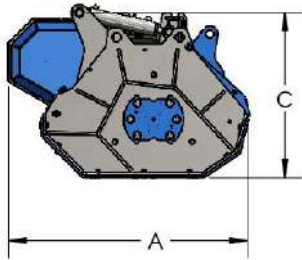
FF SERIES

FF80

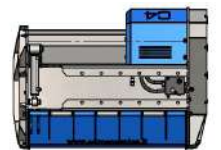
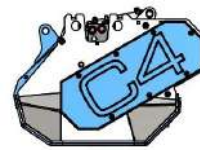
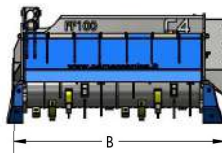
FF80L

FF100

FF100L



MODEL (fixed teeth)	FF80	FF100
MODEL (with cutting depth reducer)	FF80L	FF100L
CUTTING WIDTH (mm)	800	1000
RECOMMENDED EXCAVATOR (ton)	6-10	8-12
FF WEIGHT (fixed teeth model)	400	470
FF-L WEIGHT (mod. with cutting depth reducer)	422	496
OIL PRESSURE (bar)	250	250
OIL FLOW (l/min)	60-80	60-80
NUMBER OF TOOLS	20	24
MAX CUTTING DIAMETER (mm)	150	150
A DIMENSION (mm)	890	890
B DIMENSION (mm)	1050	1250
C DIMENSION (mm)	605	605
EXCAVATOR ATTACHMENT WEIGHT (min-max Kg)	15-40	15-40



Fluidbox for complete and safe engine management, with maximum shockproof valve, anticavitation system and flow regulation to set the rotor speed correctly.



Double-bottomed case to increase robustness and optimize the cutting volume. Internal wear-resistant lining in Hardox.



Generously sized replaceable antiwear support skids.



Predisposition of holes for a customized positioning of the attachment.



Standard with 3m hydraulic hoses. Available as an **option**: set of hoses with customized lengths.



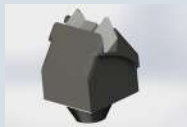
Standard replaceable tool with cutting edge in widia.



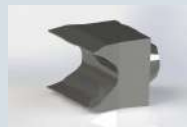
Plus replaceable tool with cutting edge in widia.



Available as an **option**: standard attachment and pins with customized measurements, flat plate for attachment as standard.



Replaceable tool with double point and cutting edge in widia.



Steel alloy tool for cutting depth reducer rotor.



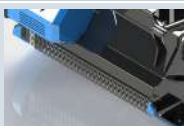
As standard on FFL series: cutting depth reducer that allows the rotor to keep a constant number revolutions and to preserve tool life.



Piston motor with external drain as standard, protected by casing in case of impacts, supported on the extension with bearings to avoid a premature wear. Belt transmission, essential for applications where the transmitted powers begin increasing, thanks to the elastic joint that has the function to preserve both the motor and the rotor from unexpected stresses. **Optional**: mechanical variable-displacement piston motor.



Fixed teeth rotor with interchangeable tools designed for heavy jobs.



Front protection with hydraulically adjustable front door, rear protection with chains.