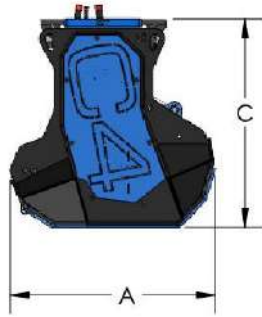


FFH SERIES

FFH120/L

FFH150/L

MODEL (fixed teeth)	FFH120	FFH150
MODEL (with cutting depth reducer)	FFH120L	FFH150L
CUTTING WIDTH (mm)	1200	1500
RECOMMENDED EXCAVATOR (ton)	14-20	16-25
FFH WEIGHT (fixed teeth model)	1200	1400
FFH-L WEIGHT (mod. with cutting depth reducer)	1250	1470
OIL PRESSURE (bar)	350	350
OIL FLOW (l/min)	130-200	130-200
NUMBER OF TOOLS	24	30
MAX CUTTING DIAMETER (mm)	250	250
A DIMENSION (mm)	905	905
B DIMENSION (mm)	1570	1870
C DIMENSION (mm)	1380	1380
EXCAVATOR ATTACHMENT WEIGHT (min-max Kg)	140-180	140-180



Fluidbox for complete and safe engine management, with anticavitation valve.



Back protection with double set of chains.



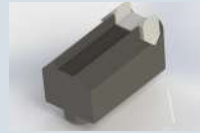
Replaceable anti-wear skids with a large surface of contact with the ground.



Generously thick case to increase the robustness and optimize the cutting volume. Internal lining in Hardox.



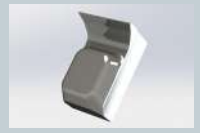
Standard with 3m hydraulic hoses. Available as **optional**: set of hoses with customized lengths.



Standard replaceable tool with cutting edge in widia.



Plus replaceable tool with cutting edge in widia.



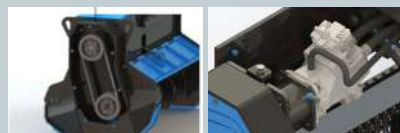
Steel alloy tool for cutting depth reducer rotor.



Available as **optional**: standard attachment and pins with customized measurements, flat plate for attachment as standard.



As standard on FFH-L series: cutting depth reducer that allows the rotor to keep a constant number revolutions and to preserve tool life.



Variable displacement piston engine, for correct torque delivery based on power demand. When the workload gets intense, the hydraulic control system increases the displacement and consequently the torque, avoiding work interruptions to make the rotor regain revs. Motor protected by the frame and mounted on an extension with bearings. Final drive belt of adequate dimension.



Forestry fixed teeth rotor with interchangeable tools designed for heavy jobs.



Standard with front protection with hydraulically adjustable door, available as **optional**: solenoid valve to control the jack with the principal line.