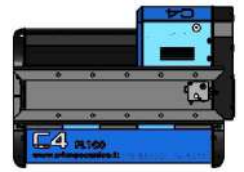
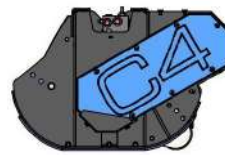
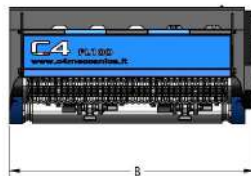
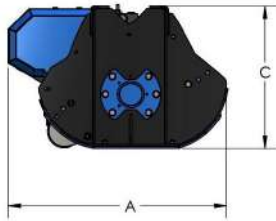


FL SERIES

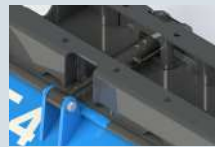
FL100 - FL110

HYDRAULIC MULCHERS WITH RETRACTABLE HAMMERS FOR EXCAVATORS FROM 5 TO 9 TONS

MODEL	FL100	FL110
CUTTING WIDTH (mm)	1020	1090
RECOMMENDED EXCAVATOR (ton)	5-8	6-9
WEIGHT (Kg)	360	450
OIL PRESSURE (bar)	250	250
OIL FLOW (l/min)	40-70	60-80
NUMBER OF HAMMERS	16	16
MAX CUTTING DIAMETER (mm)	100	100
A DIMENSION (mm)	945	945
B DIMENSION (mm)	1218	1292
C DIMENSION (mm)	610	610
EXCAVATOR ATTACHMENT WEIGHT (min-max Kg)	30-60	30-60



Fluidbox for complete and safe engine management, with maximum shockproof valve, anti-cavitation system and flow regulation to set the rotor speed correctly.



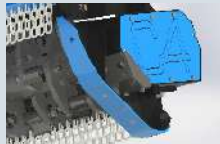
Available as **optional**: hydraulically adjustable front door.



Predisposition of holes for the positioning of the attachment along the entire length of the mulcher.



Available as **optional**: standard attachment and pins with customized measurements, flat plate for attachment as standard.



Rear protection with chains and wear-resistant skid.



Double-bottomed case to increase robustness and optimize the cutting volume.



Standard with 3mt hydraulic hoses. Available as **optional**: set of hoses with customized lengths.



Reversible symmetrical hammer.



Piston motor with external drain as standard, protected by casing in case of impacts, supported on the extension with bearings to avoid a premature wear. Belt transmission, essential for applications where the transmitted powers begin increasing, thanks to the elastic joint that has the function to preserve both the motor and the rotor from unexpected stresses. **Optional**: mechanical variable-displacement piston motor and automatic variable-displacement piston motor.



Rotor with retractable hammers, in open configuration, for weight reduction and greater cutting efficiency. Hammer supports help generate more swirl inside the case favouring the recirculation of material and greater mulching action.



Front protection with chains, adjustable on 4 positions for easy maintenance.



Available as **optional**: support roller