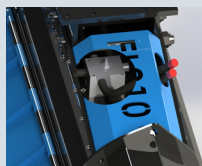
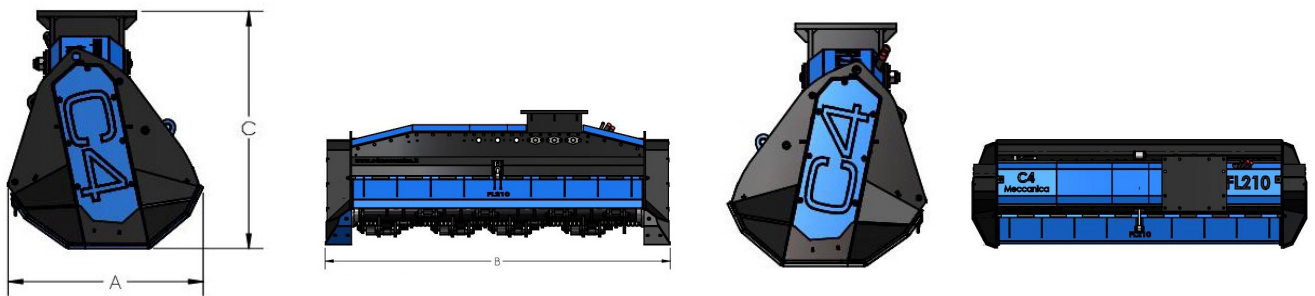


FL SERIES

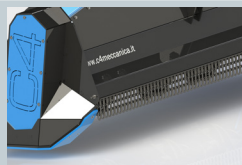
FL230

HYDRAULIC MULCHERS WITH RETRACTABLE HAMMERS FOR EXCAVATORS FROM 18 TO 25 TONS

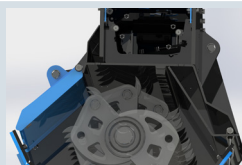
MODEL	FL230
CUTTING WIDTH (mm)	2324
RECOMMENDED EXCAVATOR (ton)	18-25
WEIGHT (Kg)	1470
OIL PRESSURE (bar)	250
OIL FLOW (l/min)	140-200
NUMBER OF HAMMERS	32
MAX CUTTING DIAMETER (mm)	100
A DIMENSION (mm)	883
B DIMENSION (mm)	2744
C DIMENSION (mm)	1071
EXCAVATOR ATTACHMENT WEIGHT (min-max Kg)	130-170



Fluidbox for complete and safe engine management, with maximum shockproof valve and relief valve. Mulcher is standard with external drainage.



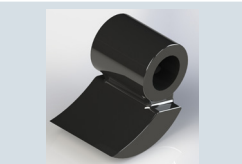
Rear protection with chains.



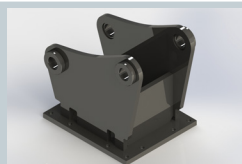
Case made in thick steel sheet with double bottom in hardox and upper supports in the engine compartment.



Standard with 3mt hydraulic hoses. Available as **optional**: set of hoses with customized lengths.



Hammer



Available as **optional**: standard attachment and pins with customized measurements, flat plate for attachment as standard.