

TF SERIES

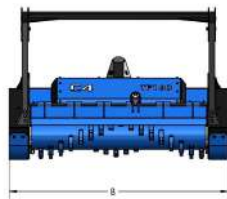
TF160/TF160L

TF180/TF180L

TF200/TF200L



MODEL (fixed teeth)	TF160	TF180	TF200
MODEL (with cutting depth reducer)	TF160L	TF180L	TF200L
CUTTING WIDTH (mm)	1560	1760	1960
TF WEIGHT (fixed teeth model)	980	1080	1200
TF-L WEIGHT (mod. with cutting depth reducer)	1020	1123	1250
OIL PRESSURE (bar)	250	250	250
OIL FLOW (l/min)	100-150	100-150	100-150
NUMBER OF TOOLS	34	40	48
MAX CUTTING DIAMETER (mm)	150	150	150
A DIMENSION (mm)	1060	1060	1060
B DIMENSION (mm)	1960	2160	2360
C DIMENSION (mm)	1360	1360	1360



Pressure gauge to monitor constantly pressure peaks.



Double-bottomed case to increase robustness and optimize the cutting volume.



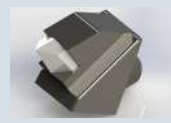
Forestry fixed teeth rotor with interchangeable tools designed for heavy jobs.



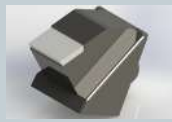
Rear protection with chains.



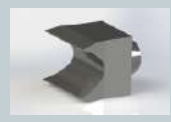
Standard with 3m hydraulic hoses. Available as **optional**: set of hoses with customized lengths.



Plus replaceable tool with cutting edge in width.



Standard replaceable tool with cutting edge in width.



Steel alloy tool for cutting depth reducer rotor.



Replaceable tool with double point and cutting edge in width.



Replaceable anti-wear skids with a large surface of contact with the ground.



As standard on TF-L series: cutting depth reducer that allows the rotor to keep a constant number revolutions and to preserve tool life.



Forestry arch with mechanical adjustment as standard, to prevent it from branches and shrubs cut from the machine fall over the skid steer.



Standard with skid-steer attachment, **optional**: customized attachment.



Piston motor placed inside the machine, supported on the extension with bearings to avoid a premature wear. Belt transmission, essential for applications where the transmitted powers begin increasing, thanks to the elastic joint that has the function to preserve both the motor and the rotor from unexpected stresses. **Optional**: variable- displacement piston motor.



Motor with anti-cavitation valve to preserve the motor during travel stops.



Front protection with hydraulically adjustable front door. Standard with six-way valve, electrically operated if the machine does not have a double auxiliary system.